

Sifam Controls New Additions

Sifam
CONTROLS
www.sifam.co.uk



Sifam Controls

Website: www.sifam.co.uk

Email: sifam@devlin.co.uk

Telephone +44 (0)1256 467367

A division of Devlin Electronics Ltd

Unit A1, Davy Close, Basingstoke, Hampshire, RG22 6PW, United Kingdom

Please find in this supplementary brochure our most recent additions to our range. For further details on any of these products, please either visit our website www.sifam.co.uk or contact our Sales Department sifam@devlin.co.uk

3/02 Series – Push on two shot knobs with coloured cap and pointer

Traditional Sifam styling in soft touch finish. The pointer continues over to the top centre of the knob body. The top of the knob is colour co-ordinated with the pointer. Complements our existing 3/02 Series nut cover version.



Key Features

- Suitable for “D” or Spline shaft encoders
- Precision feel for demanding control applications
- Wide range of colour variations
- Professional quality at an affordable price

Shaft Size

6mm x 4.5mm D
6mm T18 splined

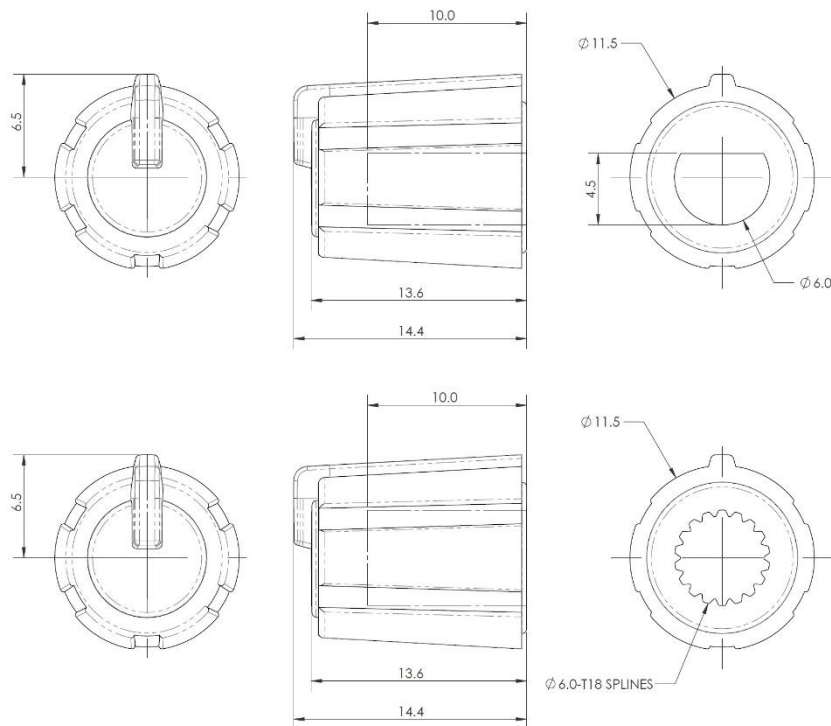
Part Number

3/02/DR110 006/26
3/02/TP110 006/13

Finish

Soft
Soft

Technical Specification



07 Series – Push on encoder knobs

Precision engineered components designed for use in audio, lighting, and video control applications. Industry standard 6mm D or splined shaft mechanical fitting makes the 07 Series equally suited to use on existing products or design-in for new products.

Quality moulding offers a smooth feel over the full range of travel. Besides the standard finishes, customers may also specify customised configurations to match existing control surfaces or the design of new products. The 07 Series push on encoder knobs are supplied as standard with hard or soft touch finishes.



Key Features

- Based on the ever-popular Sifam Controls 05 Series
- Competitively priced for reduced material cost
- Smooth precision feel for demanding applications
- Hard or soft touch finishes available
- Suitable for Ø6mm D or Ø6mm splined shafts
- Aimed at style and cost-conscious equipment manufacturers
- Illuminated and non-illuminated knobs available

10mm Version

Shaft Size	Part Number	Finish
6mm splined	3/07/TPN100 006/13	Soft
6mm x 4.5mm D	3/07/DPN100 006/26	Soft
6mm splined	6/07/TPN100 006/13	Hard
6mm x 4.5mm D	6/07/DPN100 006/26	Hard

12mm Illuminated Version

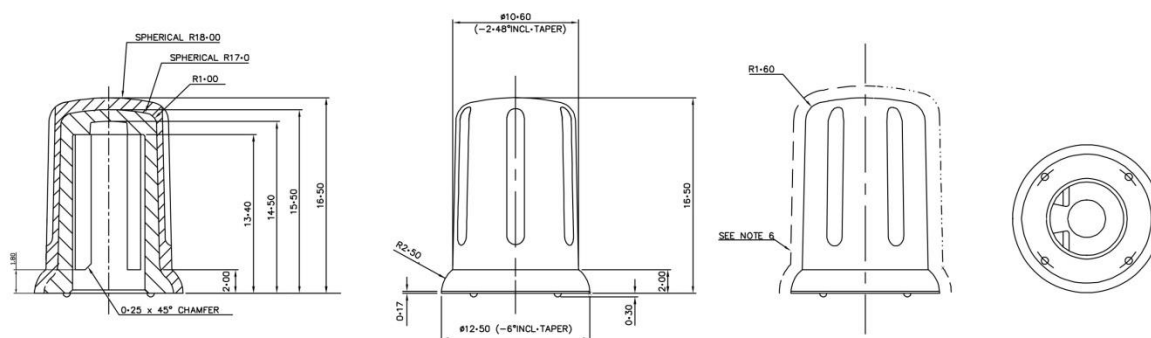
Shaft Size	Part Number	Finish
6mm splined	3/07/TPN175 006/13	Soft
6mm x 4.5mm D	3/07/DPN175 006/26	Soft
6mm splined	6/07/TPN175 006/13	Hard
6mm x 4.5mm D	6/07/DPN175 006/26	Hard

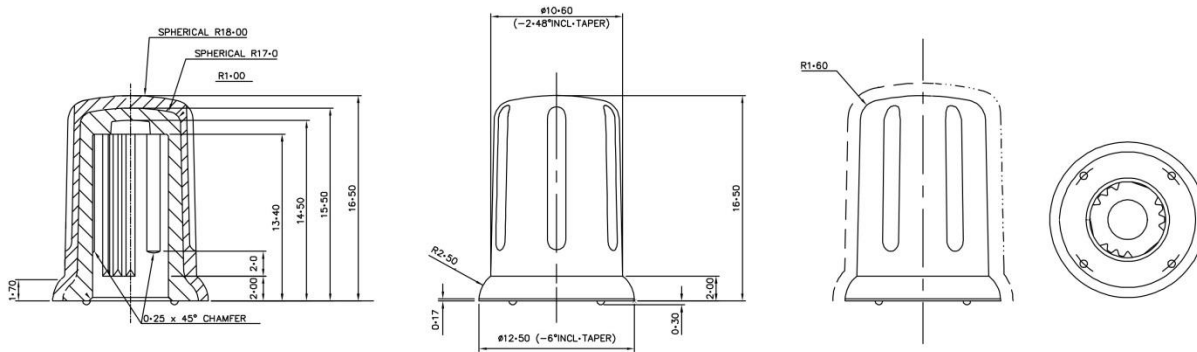
12mm Non-illuminated Version

Shaft Size	Part Number	Finish
6mm splined	3/07/TPN170 006/13	Soft
6mm x 4.5mm D	3/07/DPN170 006/26	Soft
6mm splined	6/07/TPN170 006/13	Hard
6mm x 4.5mm D	6/07/DPN170 006/26	Hard

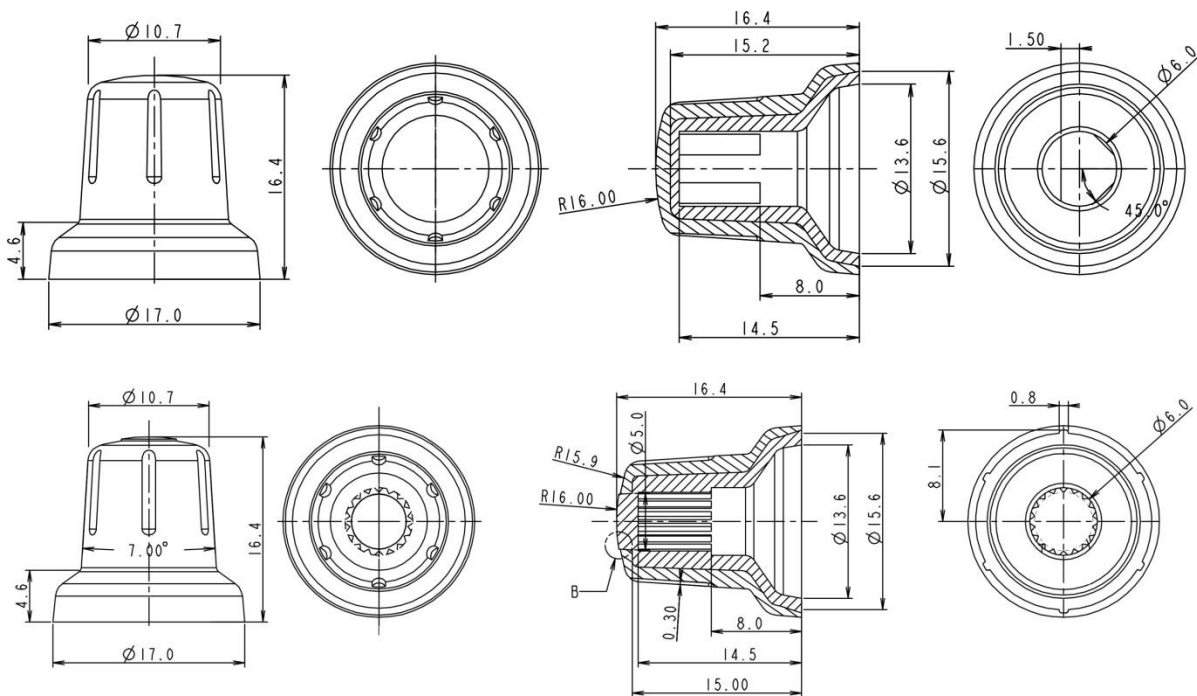
Technical Specification

10mm version (D and spline shaft)





12mm version (D and spline shaft)



08 Series – Push on Synth Style knobs Ø15mm & Ø20mm

Synth Style push-on knobs in Ø15mm and Ø20mm with 6mm D or Splined shaft fitting. Precision engineered to suit existing products or design-in on new products in the audio industry. Quality 2 shot moulding with integral pointer and spun aluminium top offers a smooth feel over the full range of travel. Customers may also specify customised configurations to match existing control surfaces or suit the design of new products, subject to MOQs.



Key Features

- Competitively priced for reduced material cost
- Smooth precision feel for demanding applications
- Suitable for Ø6mm D (indicator options at 90° steps to flat) or Ø6mm splined shafts
- Aimed at style and cost-conscious equipment manufacturers

Ø15mm Knobs

Description

2/08/DR150 006/26 BLACK/WHITE/CHROME
2/08/TP150 006/26 BLACK/WHITE/CHROME

Shaft type / Size

D shaft / Ø6mm x 4.5mm flat
Spline shaft / Ø6mm (T18)

Ø20mm Knobs

Description

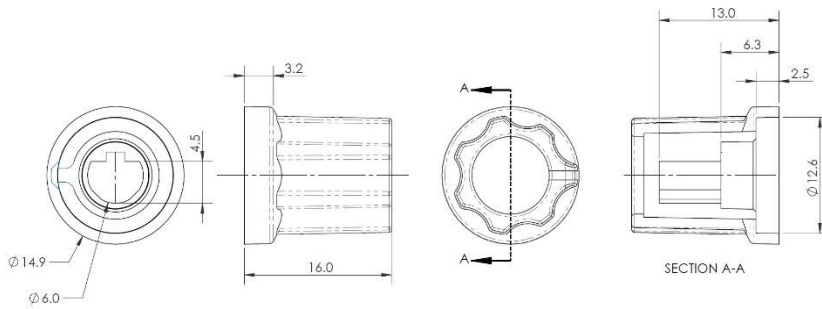
2/08/DR200 006/26 BLACK/WHITE/CHROME
2/08/TP200 006/26 BLACK/WHITE/CHROME

Shaft type / Size

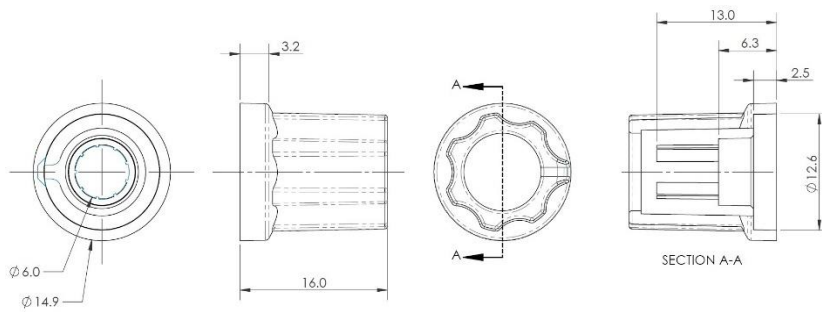
D shaft / Ø6mm x 4.5mm flat
Spline shaft / Ø6mm (T18)

Technical Specification

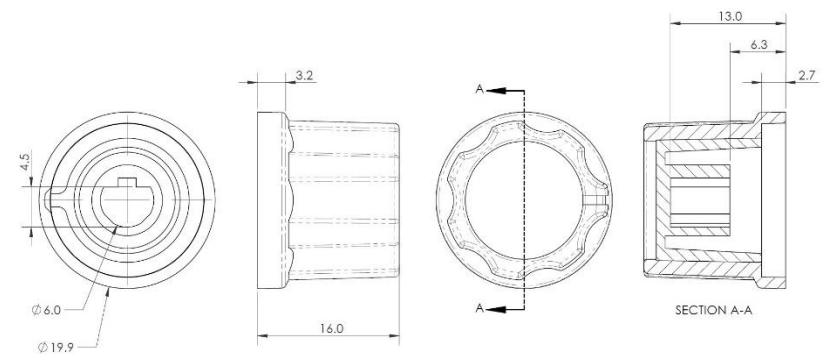
Ø15mm knob (D shaft)



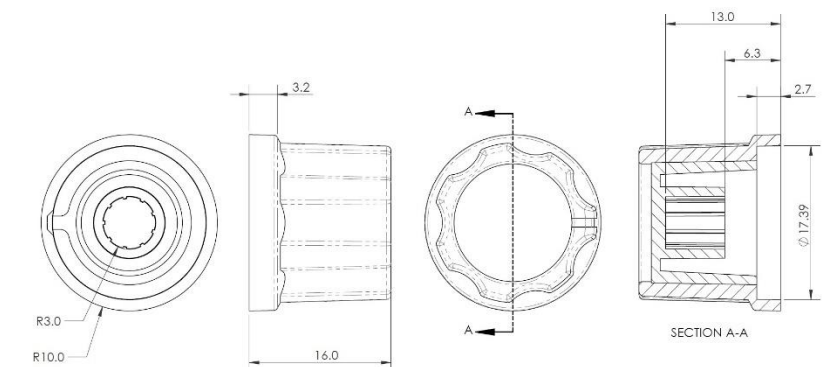
Ø15mm knob (SPLINE shaft)



Ø20mm knob (D shaft)



Ø20mm knob (SPLINE shaft)

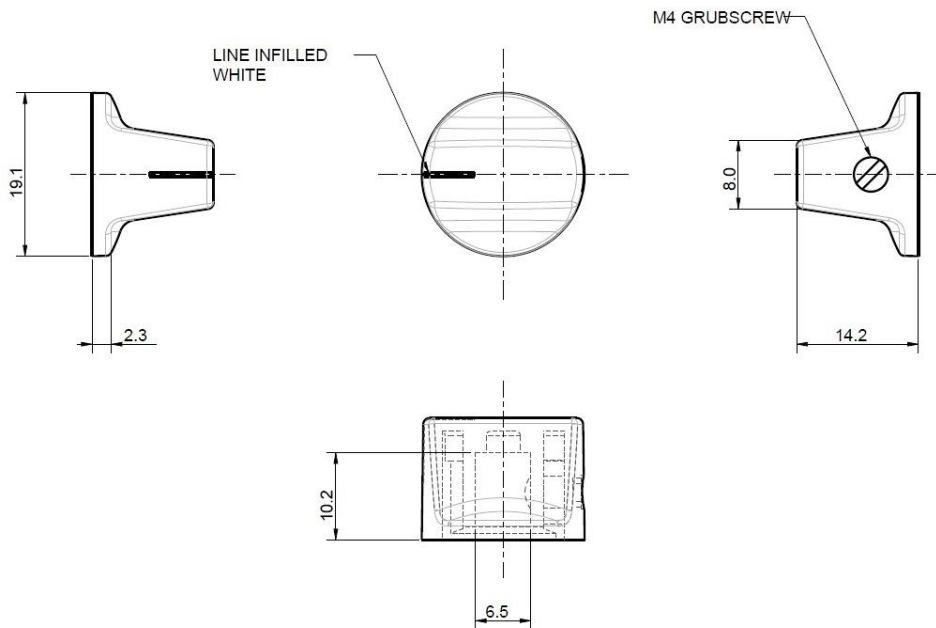


GP251 – Control knob

Suitable for a variety of applications this quality Nylon grub (set) screw type knob comes complete with printed line. It is suitable for a ¼" shaft. 6mm spline and 6mm round shaft versions also available on request. Standard colour black with white line, but other body and line colours are available on request.



Technical Specification



02 Series - Slim line illuminated two shot fader knobs

Knobs are moulded as standard with black bodies and transparent lines. Knobs can also be specified in alternative colour combinations to suit particular design applications. Designed and shaped to provide a stylish appearance with ease of control. The extensive range, available in hard or soft touch finish, is intended to suit the needs of both applications and users. The soft touch finish versions compliment Sifam rotary push-on knobs with the same finish.



Part Numbers

Tang Size

6mm x 2mm
6mm x 2mm

Part Number

3/02/LK070 02
6/02/LK070 02

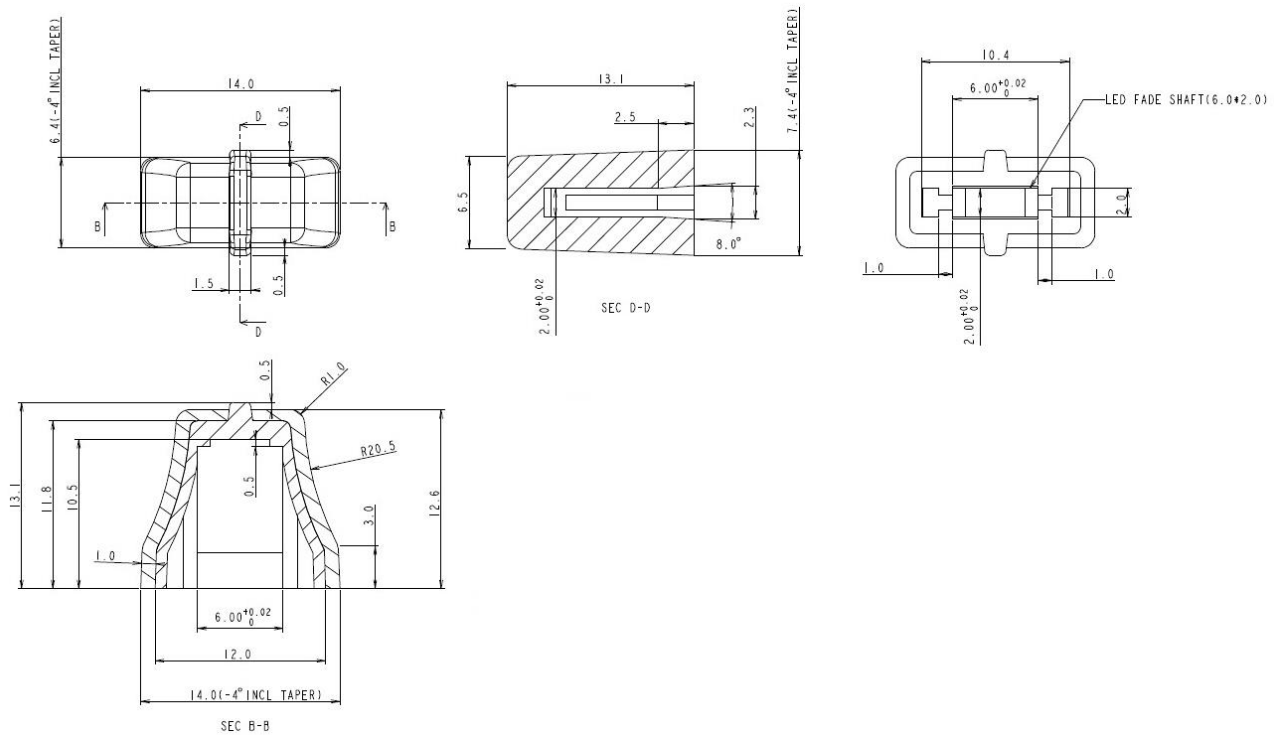
Material

Soft Touch
Hard Touch

Key features

- Based upon the ever-popular Sifam Controls slider series
- Competitively priced for reduced material cost
- Smooth precision feel for demanding applications
- Hard or soft touch finishes available
- Suitable for 6mm x 2mm tangs
- Aimed at style and cost-conscious equipment manufacturers

Technical Specification



KDE100 Series - Magnetic rotary encoder with push button

The KDE100 Series of Magnetic Rotary Encoders have been developed to provide a higher degree of rotational precision over traditional mechanical encoders. Mechanical encoders typically use metal contacts to provide the quadrature output signals, which are susceptible to mechanical wear and contamination. The KDE100 uses angular rotation of a diametrically opposed magnet to determine its position, so does not have and mechanical contacts and is unaffected by contamination.

The KDE100 also incorporates a switch function, but instead of the mechanical switch used on most encoders, proximity detection determines the height of the magnet above the sensor. When the magnetic force is less than a predetermined threshold, the user's application can ascertain the switch is active. Alternatively, several thresholds could be set to determine how hard the switch is being pressed.

The KDE100 can be supplied as just the mechanical parts (spindle, housing, spring, magnet) allowing users to add their own choice of electronics, or as a complete unit, which incorporates a PCB fitted with magnetic sensor IC and cable to connect to the host hardware.



Several options are available with the KDE100 Series:

- Voltage selection +5.0Vdc or + 3.3Vdc
- Address selection Choice of 4 addresses
- Material Brass or plastic
- Rotation Continuous or limited to 320°
- Choice of shaft 6mm 4.5mm D-Type or 6mm T18 Spline

Mechanical – All versions

Materials:

Spindle

Plastic (Acetal/POM), Brass

Housing

Plastic (Acetal/POM), Brass

Spring

Plastic (Acetal/POM)

Electrical – Complete unit only

Sensor IC

Manufacturer

Austria Microsystems (AMS)

Part Number

AS5048B-HTSP (I²C) or AS5048A-HSTP (SPI)

Magnet

Material

Neodymium Iro Boron (NdFeB) N35SH

Size

Ø6mm (0.236”) x 2.5mm (0.098”) height

Direction

Diametrically

Surface Gauss

3,800 (approx.)

Pull force

800g (1.74lb)

Interface

Protocol

I²C or ISP

Speed

Standard 100kHz, High-speed 3.4MHz

Addresses

40, 41, 42, 43 (hexadecimal)

Supply

Voltage

5.0 Vdc, 3.3 Vdc

Max Current

15 mA

Specification

Switch Mechanical Travel

1.5mm

Switch Push Force

600 gf (typical)

Rotation

360°

Resolution

14-bit (0.0219° LSB)

Rotational Life

>1,000,000

Compliance

UKCA, CE, RoHS

Part Numbers

KDE100XYZ

X is material type

1 = Plastic

2 = Brass

Y is shaft type

1 = D shaft

2 = Spline shaft

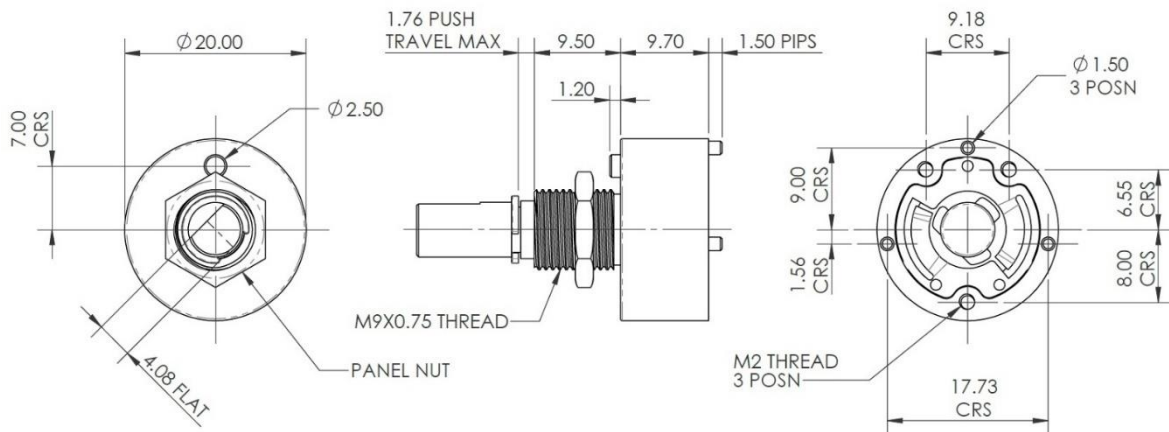
Z is encoder model type

1 = Housing only (body, spindle, spring & magnet)

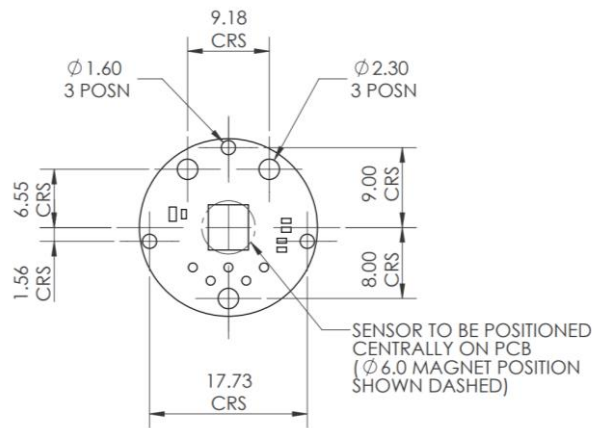
2 = Standalone encoder (with PCB) SPI version

3 = Standalone encoder (with PCB) I²C version

Dimensions



Recommended PCB Footprint



SFK70 Series T-Bar fader

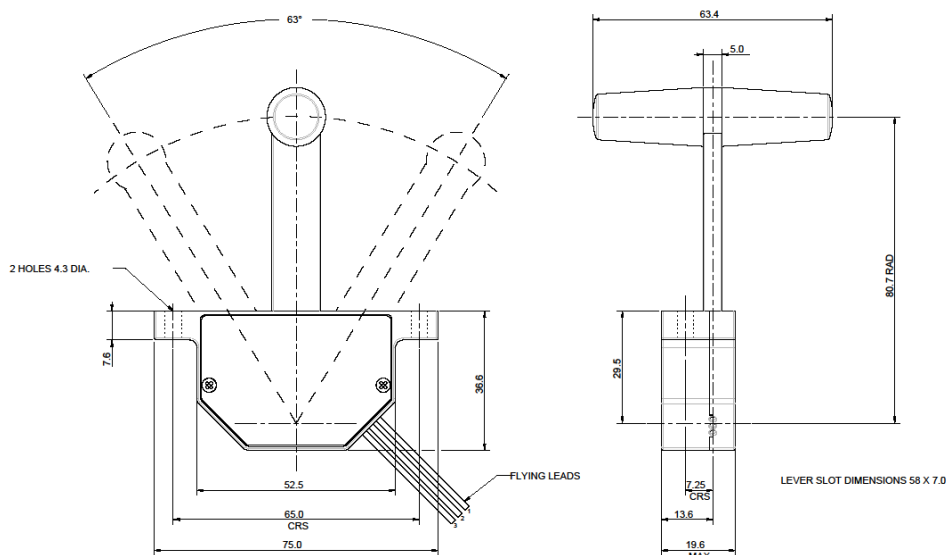
A high precision engineered instrument designed for use in audio, video, and lighting control applications. Conforming to industry standard mechanical format the SFK70 Series may be used in both existing and new products. Precision Oilite® bearings and acetyl bushes offer a smooth linear feel over the full range of travel. A purpose calibrated contactless Hall affect sensor provides accurate noise free operation. Output options include analogue linear voltage and Pulse Width Modulation (PWM). Customers may also specify custom output configurations to match existing interface electronics. Supplied as standard with anodised Aluminium handles and levers. Individual custom options can be provided to meet customers' aesthetic requirements.



Key Features

- Standard mechanical package
- Absolute positioning
- Smooth precision control
- Anodised Aluminium handle and lever (custom options available to order)
- Noise free operation
- Contactless Hall affect sensor
- Analogue or PWM output options (custom calibration available to order)

Technical Specification



Electrical

Supply	5V ±0.5VDC
Typ. supply current	13.5mA
Max. supply current	10.0mA
Overvoltage	24VDC
Reverse voltage protection	-12VDC
Output impedance	10Ω

Environmental

Operating temperature	-40°C to +50°C
Storage temperature	-40°C to + 70°C

Mechanical

Actuator travel	63° (±31.5° about centre)
Operating force	1.5N
Weight	100g
Expected life	1 million operations
Lever action	Friction
Lead length	400mm

Connections

Colour	Function
Red	+5VDC supply
White	Output
Black	0V

Custom plastic products

Sifam Controls also provides the skill and expertise to design and manufacture injection mould tooling to supply your bespoke customised plastic components. This service is available to those customers requiring their own personal styling and functionality to set them apart from the competition. Share your ideas and challenges with Sifam Controls and let us work together to deliver a solution.



Lakeview switches

Sifam Controls is proud to have become the official UK Distributor for Lakeview Switches. This comprehensive range offers high-quality switches, including tactile, push-button and LCD programmable. Switches are available with LED illumination, tactile travel, with competitive lifespans and affordability. The switches are ideally suited for most audio, broadcasting, lighting, and video control applications.



Sifam Controls

Website: www.sifam.co.uk

Email: sifam@devlin.co.uk

Telephone +44 (0)1256 467367